

# RAM-PORT

## REMOTE ASSET MONITORING & WEB SERVER

- Easy Real-time Monitoring of Remote Assets via the Internet
- Secure Web Server Comms (SSL) and Firewall protected web server
- Universal Connectivity
- Low Cost Always-on Connection



### Description

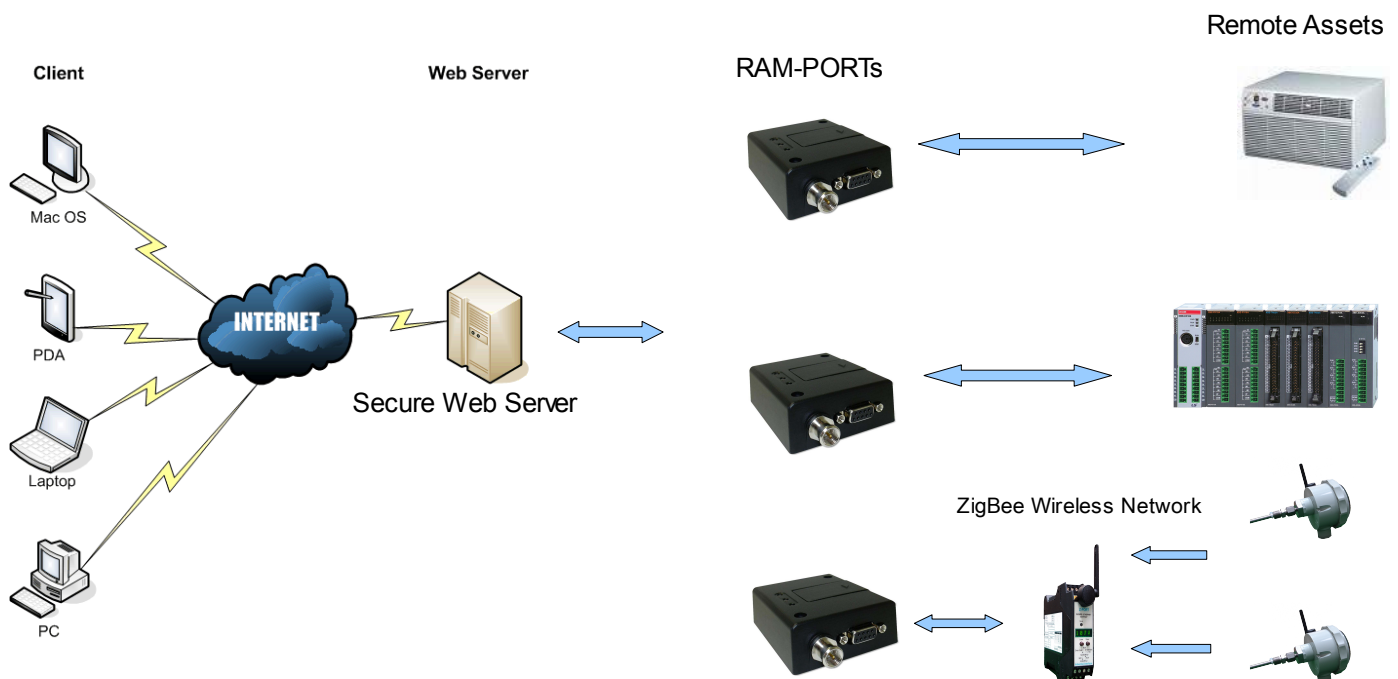
The RAM-PORT is a small and cost-effective method of monitoring remote plant and equipment from any PC or internet-enabled terminal loaded with a standard web browser.

The RAM-PORT reports back to the web server at user-defined intervals and uploads any data requested. This can be process parameters such as temperatures, pressures or vibration or hours run and any alarms.

All the user has to do is log in securely on a PC or similar with internet access.

In addition reports can be automatically generated, including email alarms and SMS text messages.

A typical application diagram is shown below but the number of applications is almost endless, please contact us to discuss your potential application.



## Web Service Features

The data transmitted by the RAM-PORT is received by a Firewall protected web server housed in a secure data centre. The software has a Username and Password protected interface together with administrator defined user access levels. The RAM-PORT is configured to update the server with new data at user-programmable intervals. At the same time the RAM-PORT can receive any changes in system configuration.

Other features provided include:

- Activity Reports
- Hours run information
- Automatically generated alarms via SMS Text message or email
- Audit trails
- Tabular real time and historical data
- Graphic Trending of parameters including historical playback.
- Instant view of the status of all connected equipment.

A typical data table is shown below:

Location	Last Check in	Compressor Status	Manifold Temperature	Signal Quality	Hours Run Since Last Service	Total Hours Run	Control Output
Solihull	17/3/08 10:48	OK	107 °C	Good	104h 32m	1023h 53m	Off
Newcastle	17/3/08 10:52	Fault	175 °C	Good	152h 13m	852h 35m	On
Birmingham	17/3/08 10:54	OK	111°C	Good	172h 51m	931h 27m	Off
Cheltenham	17/3/08 10:56	OK	121°C	Good	192h 32m	774h 16m	Off
Bristol	17/3/08 10:58	OK	109°C	Good	252h 17m	662h 15m	Off
Plymouth	17/3/08 11:00	OK	102°C	Good	1152h 13m	8451h 12m	Off

## GPRS/GSM Terminal General Specifications

Parameter	Min	Typ	Max	Comments
Supply Voltage	5	12	36	Vdc
Transmit Bands				Quad Band EGSM 850/900/1800/1900MHz
Output Power	1W		2W	1W at 850/900 MHz 2W at 1800/1900 MHz
Control Commands		AT		To GSM 07.05, 07.07 and enhancements
Protocol				TCP/IP Stack access via AT commands
Sensitivity				-107dB at 850/900 -106dB at 1800/1900
Ethernet Interface				10Base-T or 100Base-T
Dimensions				77 x 67 x 26 mm
Weight			90g	
Storage Ambient	-40°C		+85°C	
Operating Ambient	-30°C		+75°C	
Interfaces	RS232	RJ11 Power	FME ant	4 general purpose inputs 1 A/D converter
Notes	Full data available in product manual please call sales.			